

DTSD545

Three Phase Smart Meter

DTSD545 is a new generation of multi-functional meter for Thailand marketing. The meter can realize the function of automatic reading. This meter complies with IEC 62053-21, IEC 62053-23 and TISI 2543-2555 (Thailand Standard). With low power consumption, It is suitable for the users in electric utility, residential building, university, apartment project, etc.

FEATURES

- Support optical port and RS485 communication with DLMS Protocol.
- Multi-tariff, Up to 4 tariffs per day.
- Temper-proof.

MEASUREMENTS

- Measurement of active, reactive, and apparent in at least 4 tariffs.
- Four-quadrant metering for export and import energy.
- Record the instantaneous (Voltage, Current, Power Factor, etc).
- Network Status (Current reverse).

DISPLAY

- Support 2 display mode.
 - Scrolling display
 - Button display
- The display items can be defined.

LOAD PROFILE

- 2 Chanel of profile group.
- Up 20 items per profile group can be defined.
- Each channel contains 4,320 records (45 Days at 15 minutes of time interval).



TAMPERING PROOF & EVENT

- Meter cover open.
- Terminal cover open.
- Power off.
- Programming.
- Current reverse.
- Magnetic influence.
- low battery

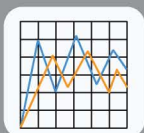
HIGHLIGHT



High accuracy



Multi Communication



Load Profile



Power quality

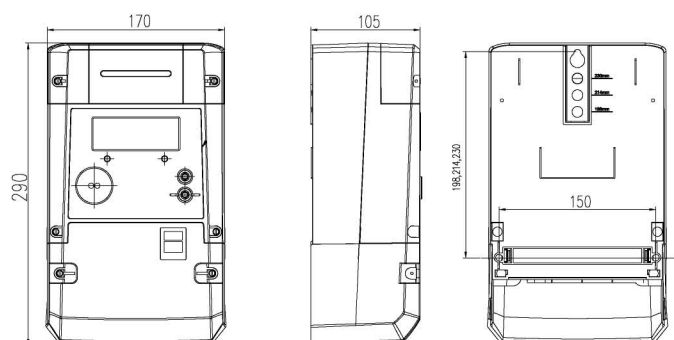


Waterproof

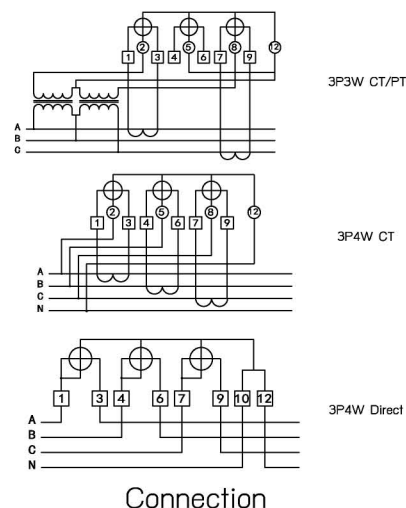
SPECIFICATION

No.	Item	Description		
1	Connection	Instrument Transformer		Direct
2	Connection wiring	3Phase 4Wire	3Phase 3Wire	3Phase 4Wire
3	Standard	IEC 62053-22 IEC 62053-23		IEC 62053-21 IEC 62053-23
4	Accuracy class	Active class 0.5s Reactive class 2		Active class 1 Reactive class 2
5	Rated voltage	3x230/400V	3x110V, 3x120V	3x230/400V
6	Rated current	2.5(10)A, 5(6)A		5(100)A, 30(100)A
7	Rated frequency	50, 60 Hz		
8	Protection class	IP54 (Outdoor)		
9	Power consumption	≤2W/5VA (Voltage circuit), ≤0.5VA (Current circuit)		
10	AC voltage test	4kV, 1min		
11	Impulse voltage test	8kV, 1min		
12	Operation temperature	-45°C ~ 75°C		
13	Storage temperature	-55°C ~ 85°C		
14	Clock accuracy	≤0.2s/Day		
15	Battery capacity	Li 1200mAh/3.6V (Can be replaced)		
16	Local communication	1 of Optical port, 1 of RS485 Port		
17	Remote communication	GPRS modem, 3G modem, LTE modem, RF module, PLC module		
18	TOU function	Up to 4 tariffs and, max 100 holidays		
19	Dimension (WxHxD)	215x125x78.8mm		
20	Weight	1.8Kgs		

DIMENSION & CONNECTION



Dimension (Unit:mm)



Connection



Holley Group Electric (Thailand) co.,Ltd.
No. 77/51 14th Floor, Sinn Sathorn Tower,
Krunghthonburi Road, Klongthonsai, Klungsan,
Bangkok 10600 <http://www.holley.co.th>
Tel. (+662) 867-6971-3 Fax. (+662) 867-6980

